



 **STORM CREEK®**

**2023** Fall/Winter  
Collection





# Let's live better. **Together.**

Our company makes **Better Product for the Greater Good.** From recycled fabrics to mindful tailoring to fine details, we weave sustainability and innovation into everything we do.

You can wash and wear our apparel year after year and look great (and feel great, too!) each and every time. We promise you'll be delighted with your purchase. If you're not, **we'll make it right.**



Better **Fabric.**



Better **Fit.**



Better **Finish.**

Most of our styles are made with fabrics and insulation derived from post-consumer waste, such as plastic bottles. See this icon for our exclusive eco-made styles and bottle counts.



We carry inventory for many of our key items year-round, which allows you to buy as needed. Keep your stock fresh with new looks or great selling items! No minimums required.



These colors are new for 2023.



## **2023 BUYING SEASON**

*Early Buy Deadline: February 1, 2023*

*Start Ship Date: August 15, 2023*

ALL SHIPMENTS ARE FOB, EAGAN, MN.

\* Arrival dates and size offering per color may vary. Please visit [retailer.stormcreek.com](http://retailer.stormcreek.com) for availability.

# Women's



Earth tones, high-performance details, and dreamy fabrics define our 2023 Fall/Winter Collection. Ready for a board meeting, to happy hour, and everything in between.

All styles shown are sustainably sourced, whether made from recycled materials, produced with environmentally friendly practices, or both.



Gray | **C**

Blue Mist

Platinum

Navy

## Naturalist

2555 | 4-Way Stretch Eco-Woven Outdoor Shirt

**\$34.50 WHSL**

\$90.00 MSRP

55% polyester/37% recycled polyester/8% spandex  
Women's Sizes: XS-3XL



True Blue



Jet

## Influencer Gingham

2575 | 4-Way Stretch Eco-Woven Shirt

**\$29.50 WHSL**

\$75.00 MSRP

55% polyester/37% recycled polyester/8% spandex  
Women's Sizes: XS-3XL

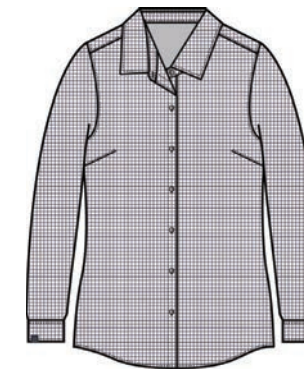


4-WAY STRETCH

### NEW COLORS



Black | **N**



White/Navy

## Influencer Windowpane

2595 | 4-Way Stretch Eco-Woven Shirt

**\$29.50 WHSL**

\$75.00 MSRP

55% polyester/37% recycled polyester/8% spandex  
Women's Sizes: XS-3XL



LIGHTWEIGHT

### NEW COLORS



Black | **N**

White | **N**

Dark Heather Gray

Glacier Blue

Navy

Melon Orange

Violet Purple

## Sightseer Tee

1565 | Jersey Jewel Neck Tee

**\$15.00 WHSL**

\$40.00 MSRP

47% recycled polyester/47% polyester/6% spandex  
Women's Sizes: XS-3XL



5

NEW STYLE



Dark Heather Gray | N  
XS-3XL  
White | N  
Meadow Green | N  
Nutmeg Brown | N  
Melon Orange | N



# Sightseer Hoodie

1575 | Lightweight Long Sleeve Hoodie

**\$20.00 WHSL**  
\$50.00 MSRP

47% recycled polyester/47% polyester/6% spandex  
Women's Sizes: XS-2XL | DH = XS-3XL

NEW COLORS



C Black, C Dark Heather Gray, C Indigo, C Light Heather Gray, C Navy, N Balsam Green, N Alaskan Blue, N Nutmeg Brown, Lavender, Glacier Blue, Melon Orange, Meadow Green, Redwood



# Pacesetter

2345 | Quarter Zip Sueded Jersey

**\$21.00 WHSL**  
\$55.00 MSRP

44% recycled polyester/44% polyester/12% spandex  
Women's Sizes: XS-3XL



Charcoal  
Peri Blue  
Violet Purple



# Renewer

1895 | Quarter Zip Bamboo Pullover

**\$24.00 WHSL**  
\$60.00 MSRP

60% recycled polyester/40% bamboo viscose  
Women's Sizes: XS-3XL

NEW COLORS



Zinc Gray | C  
Dark Heather Gray | C  
Navy | C  
Olive Drab | N  
Melon Orange  
Glacier Blue



# Bodyguard

2455 | Eco-Camo Quarter Zip

**\$27.00 WHSL**  
\$70.00 MSRP

65% polyester/35% recycled polyester jacquard knit  
Women's Sizes: XS-3XL



Black | C  
Navy | C

# Adapter

2425 | Smart Stretch Pullover

**\$24.00 WHSL**  
\$60.00 MSRP

93% recycled polyester/7% spandex  
Women's Sizes: XS-3XL



Jet  
Light Heather Gray

# Founder

4675 | Feather Sweater Pullover

**\$27.00 WHSL**  
\$70.00 MSRP

50% polyester/47% recycled polyester/3% spandex  
Women's Sizes: XS-3XL

NEW COLORS



Black | C Dark Heather Gray | C Balsam Green | N Glacier Blue | N White | N Chestnut Brown Oatmeal



### Sidekick Crew

2435 | Long Sleeve Crew Neck

**\$25.00 WHSL**  
\$65.00 MSRP

Solid: 88% recycled polyester/12% spandex sueded jersey  
Heather: 44% polyester/44% recycled polyester/12% spandex sueded jersey  
Women's Sizes: XS-3XL

NEW COLORS



Balsam Green | N Dark Heather Gray Oatmeal



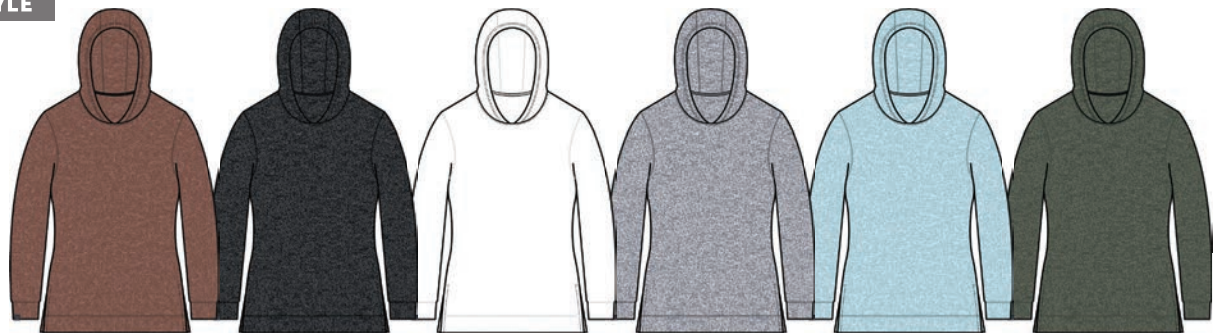
### Sidekick Quarter Zip

2445 | Quarter Zip Long Sleeve Hoodie

**\$29.50 WHSL**  
\$75.00 MSRP

44% recycled polyester/44% polyester/12% spandex sueded jersey  
Women's Sizes: XS-3XL

NEW STYLE



Nutmeg Brown | N Dark Heather Gray White Light Heather Gray Glacier Blue Spruce Green



### Sidekick Hoodie

2696 | Long Sleeve Hoodie

**\$28.00 WHSL**  
\$70.00 MSRP

Solid: 88% recycled polyester/12% spandex sueded jersey  
Heather: 44% recycled polyester/44% polyester/12% spandex sueded jersey  
Women's Sizes: XS-3XL

NEW STYLE



Dark Heather Gray | N Oatmeal | N Deep Purple | N



### Sidekick Mock

2675 | Relaxed Mock Neck with Drawcord

**\$28.00 WHSL**  
\$70.00 MSRP

44% recycled polyester/44% polyester/12% spandex sueded jersey  
Women's Sizes: XS-2XL



### Trendsetter

2994 | Sueded Jersey Jogger

**\$25.00 WHSL**  
\$65.00 MSRP

Solid: 88% recycled polyester/12% spandex sueded jersey  
Heather: 44% recycled polyester/44% polyester/12% spandex sueded jersey  
Women's Sizes: XS-2XL



Dark Heather Gray Black



### Stabilizer

3515 | Heather Performance Fleece Jacket

**\$29.50 WHSL**  
\$75.00 MSRP

Solid: 100% recycled polyester smooth face fleece  
Heather: 55% recycled polyester/45% polyester smooth face fleece  
Women's Sizes: XS-3XL



Dark Heather Gray | C Black | C Navy



Gray | C

Navy | C



## Architect

2645 | Diamond Fleece Pullover

**\$29.50 WHSL**  
\$75.00 MSRP

Interlock: 40% polyester/40% recycled polyester/15% rayon/5% spandex  
Quilt: 80% polyester/20% recycled polyester  
Women's Sizes: XS-3XL

NEW STYLE



Black | N  
XS-3XL

Navy | N  
XS-3XL

Sagebrush Green | N  
XS-2XL

Deep Purple | N  
XS-2XL



## Summit Hoodie

4365 | Microfleece/Sherpa Bonded Hoodie

**\$29.50 WHSL**  
\$75.00 MSRP

Solid: 100% recycled polyester  
Women's Sizes: XS-3XL



Jet/Jet | C

Navy/Jet | C

Platinum | C

Black | C



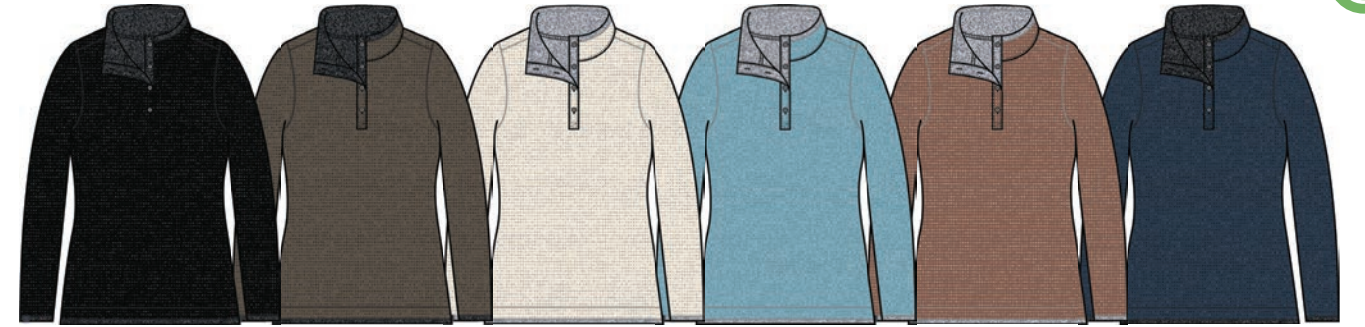
## Maverick Quarter Zip

2925 | Quarter Zip Waffle Knit Pullover

**\$35.00 WHSL**  
\$90.00 MSRP

60% cotton/40% recycled polyester interlock waffle  
Women's Sizes: XS-3XL

NEW COLORS



Black | C

Olive Drab | N

Marshmallow | N

Arctic Blue

Chestnut Brown

Marine Blue



## Maverick Button-Up

2965 | Button-Up Waffle Knit Pullover

**\$35.00 WHSL**  
\$90.00 MSRP

60% cotton/40% recycled polyester interlock waffle  
Women's Sizes: XS-3XL

NEW COLORS



Cinder | C

Navy | C

Platinum | C

Alaskan Blue | N

Black | N

Glacier Blue/  
Platinum

Meadow Green



## Overachiever Jacket

4625 | Sweaterfleece Jacket

**\$38.00 WHSL**  
\$95.00 MSRP

80% recycled polyester/20% polyester sweaterfleece (345 GSM)  
Women's Sizes: XS-3XL

NEW COLORS



Cinder | C

Navy | C

Platinum | C

Balsam Green | N

Black | N

Lavender

Glacier Blue



## Overachiever Vest

4635 | Sweaterfleece Vest

**\$34.00 WHSL**  
\$85.00 MSRP

80% recycled polyester/20% polyester sweaterfleece (345 GSM)  
Women's Sizes: XS-3XL

NEW COLORS

Platinum | **N**Balsam Green | **N**Black | **N**

## Overachiever Pullover

4646 | Sweaterfleece Pullover

**\$35.00 WHSL**

\$90.00 MSRP

80% recycled polyester/20% polyester sweaterfleece (345 GSM)  
Women's Sizes: XS-3XL

Black | **C**Jet/Black | **C**

## Trailblazer Jacket

4005 | High-Stretch Fleece-Lined Softshell Jacket

**\$32.00 WHSL**

\$80.00 MSRP

Outer Layer: 94% recycled polyester/6% spandex woven,  
8K/1K waterproof/breathable  
Inner Layer: 100% recycled polyester microfleece  
Women's Sizes: XS-3XL

Black | **C**

Navy



## Explorer

6525 | Ultimate Stretch Waterproof Breathable Rain Jacket

**\$56.00 WHSL**

\$140.00 MSRP

Shell: 52% polyester/48% recycled polyester,  
20K/20K waterproof/breathable  
Women's Sizes: XS-3XL

Black | **C**Jet/Black | **C**

## Trailblazer Vest

4055 | High-Stretch Fleece-Lined Softshell Vest

**\$28.00 WHSL**

\$70.00 MSRP

Outer Layer: 94% recycled polyester/6% spandex woven,  
8K/1K waterproof/breathable  
Inner Layer: 100% recycled polyester microfleece  
Women's Sizes: XS-3XL

Black  
XS-2XLNavy  
XS-3XL

## Commuter

6305 | Executive All-Season Jacket

**\$54.00 WHSL**

\$135.00 MSRP

Shell: 50% recycled polyester/50% polyester,  
10K/10K waterproof/breathable  
Women's Sizes: XS-3XL

Black/Black | **C**Navy/Navy | **C**Tar/Black | **C**

Bright Red/Black



## Guardian

4260 | Velvet-Lined Softshell Jacket

**\$44.00 WHSL**

\$110.00 MSRP

Outer Layer: 86% recycled polyester/14% spandex woven,  
10K/3K waterproof/breathable  
Inner Layer: 50% recycled polyester/50% polyester  
Women's Sizes: XS-3XL



Black | C Navy | C Glacier Blue Olive Green XS-2XL



**\$35.00 WHSL**  
\$90.00 MSRP

Shell: 60% polyester/40% recycled polyester  
Insulation: 65% polyester/35% recycled polyester (100 GSM)  
Women's Sizes: XS-3XL

## Discoverer

3005 | Smooth Face Vest

NEW COLORS



Black | C Navy | C Platinum | C Titanium | C Jet/Black | C Navy/Jet White



**\$35.00 WHSL**  
\$90.00 MSRP

Shell: 60% polyester/40% recycled polyester  
Insulation: 65% polyester/35% recycled polyester (120 GSM)  
Women's Sizes: XS-3XL

## Front Runner

3125 | Eco-Insulated Quilted Vest



Black | C Jet | C Navy | C Jet/Black | C Navy/Jet



**\$46.00 WHSL**  
\$115.00 MSRP

Shell: 60% polyester/40% recycled polyester  
Insulation: 65% polyester/35% recycled polyester (120 GSM)  
Women's Sizes: XS-3XL

## Front Runner

3165 | Eco-Insulated Quilted Jacket

NEW COLORS



3145D | Jet | N



Jet

## Traveler Jacket

3145 | Eco-Insulated Packable Jacket



3145 | Black | C 3145 | Navy | C 3145 | Nickel



Black, Navy, Nickel

**\$44.00 WHSL**  
\$110.00 MSRP

Shell: 100% recycled polyester fine denier woven (Jet)  
Shell: 60% polyester/40% recycled polyester (Black, Navy, Nickel)  
Insulation: 65% polyester/35% recycled polyester (60 GSM)  
Women's Sizes: XS-3XL

NEW COLORS



3155D | Jet | N



Jet

## Traveler Vest

3155 | Eco-Insulated Packable Vest



3155 | Black | C 3155 | Navy | C 3155 | Nickel



**\$35.00 WHSL**  
\$90.00 MSRP

Shell: 100% recycled polyester fine denier woven (Jet)  
Shell: 60% polyester/40% recycled polyester (Black, Navy, Nickel)  
Insulation: 65% polyester/35% recycled polyester (60 GSM)  
Women's Sizes: XS-3XL

NEW STYLE



Black | N



Fatigue Green | N



Nutmeg Brown | N



**\$42.00 WHSL**  
\$105.00 MSRP

Shell: 100% recycled polyester fine denier woven  
Insulation: 65% polyester/35% recycled polyester (100 GSM)  
Women's Sizes: XS-2XL

## Artisan

3075 | Shirt Jacket



NEW STYLE



Black | **N**

Navy | **N**

Fatigue Green | **N**



## Aviator

3055 | Bomber Jacket

**\$42.00 WHSL**

\$105.00 MSRP

Shell: 100% recycled polyester fine denier woven  
 Insulation: 65% polyester/35% recycled polyester (60 GSM)  
 Women's Sizes: XS-2XL

NEW STYLE



Black | **N**



## Innovator II

3095 | Insulated Hoodie

**\$50.00 WHSL**

\$125.00 MSRP

Shell: 100% recycled polyester fine denier woven  
 Insulation: 65% polyester/35% recycled polyester (120 GSM)  
 Women's Sizes: XS-2XL



Black



Dark Heather Gray



## Defender

6325 | Luxe Eco-Insulated Jacket

**\$75.00 WHSL**

\$190.00 MSRP

Shell: 50% recycled polyester/50% polyester woven  
 10K/10K waterproof/breathable  
 Insulation: 65% polyester/35% recycled polyester (160 GSM)  
 Women's Sizes: XS-3XL

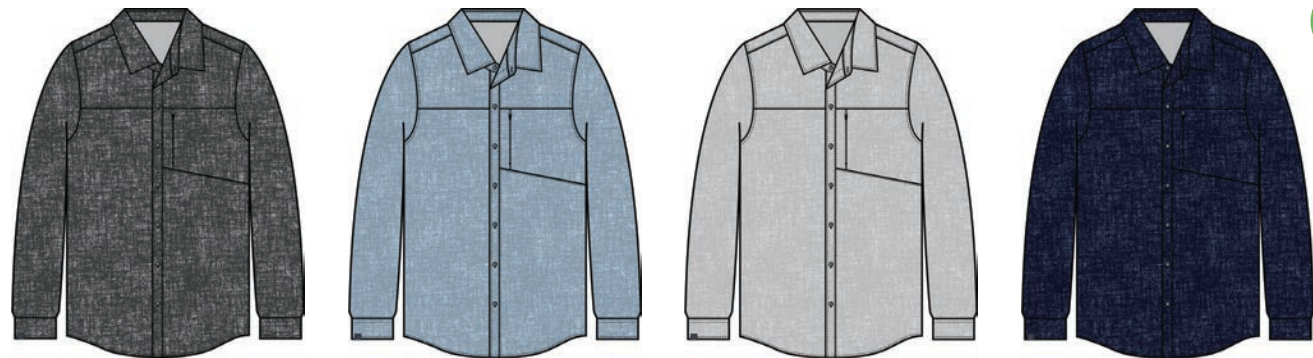


# Men's



Earth tones, high-performance details, and dreamy fabrics define our 2023 Fall/Winter Collection. Ready for a board meeting, to happy hour, and everything in between.

All styles shown are sustainably sourced, whether made from recycled materials, produced with environmentally friendly practices, or both.



Gray | **C**  
S-4XL

Blue Mist

Platinum

Navy

## Naturalist

2550 | 4-Way Stretch Eco-Woven Outdoor Shirt

**\$34.50 WHSL**  
\$90.00 MSRP

55% polyester/37% recycled polyester/8% spandex  
Men's Sizes: S-3XL



True Blue



Jet

## Influencer Gingham

2570 | 4-Way Stretch Eco-Woven Shirt

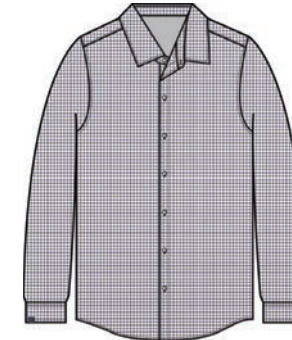
**\$29.50 WHSL**  
\$75.00 MSRP

55% polyester/37% recycled polyester/8% spandex  
Men's Sizes: S-5XL, LT-2XLT



4-WAY STRETCH

### NEW COLORS



White/Navy | **C**



Black | **N**

## Influencer Windowpane

2590 | 4-Way Stretch Eco-Woven Shirt

**\$29.50 WHSL**  
\$75.00 MSRP

55% polyester/37% recycled polyester/8% spandex  
Men's Sizes: S-5XL, LT-2XLT



### NEW COLORS



Black | **N**

White | **N**

Melon Orange | **N**

Dark Heather Gray

Navy

Peri Blue

Mint Green

## Sightseer Tee

1560 | Long Sleeve Jersey Crew neck Tee

**\$15.00 WHSL**  
\$40.00 MSRP

47% recycled polyester/47% polyester/6% spandex  
Men's Sizes: S-4XL



LIGHTWEIGHT

NEW STYLE



Dark Heather Gray | **N**  
S-4XL

White | **N**

Meadow Green | **N**

Olive Drab | **N**



## Sightseer Hoodie

1570 | Long Sleeve Lightweight Hoodie

**\$20.00 WHSL**

\$50.00 MSRP

47% recycled polyester/47% polyester/6% spandex  
Men's Sizes: S-3XL

NEW COLORS



**C** Dark Heather Gray, **C** Indigo, **C** Light Heather Gray, **C** Navy, **C** Smokey Blue, **C** Black, **N** Nutmeg Brown, **N** Olive Drab, **N** Redwood, Orange, Dark Heather Gray/Black, Spruce Green



## Pacesetter

2340 | Quarter Zip Sueded Jersey

**\$21.00 WHSL**

\$55.00 MSRP

45% recycled polyester/45% polyester/10% spandex  
Men's Sizes: S-4XL

NEW STYLE



Charcoal | **N**

Peri Blue | **N**

Flame Orange | **N**



## Renewer

1890 | Quarter Zip Bamboo Pullover

**\$24.00 WHSL**

\$60.00 MSRP

60% recycled polyester/40% bamboo viscose interlock  
Men's Sizes: S-3XL

NEW COLORS



Navy | **C**

Zinc Gray | **C**

Dark Heather Gray | **C**

Olive Drab | **N**

Peri Blue



## Bodyguard

2450 | Eco-Camo Pullover

**\$27.00 WHSL**

\$70.00 MSRP

65% polyester/35% recycled polyester  
Men's Sizes: Core = S-4XL | Not Core = S-3XL



Black | **C**

Navy | **C**



## Adapter

2420 | Smart Stretch Pullover

**\$24.00 WHSL**

\$60.00 MSRP

93% polyester/7% spandex smooth face fleece  
Men's Sizes: S-4XL



Jet

Light Heather Gray



## Founder

4670 | Sweater Pullover

**\$27.00 WHSL**

\$70.00 MSRP

50% polyester/47% recycled polyester/3% spandex heather jersey  
Men's Sizes: S-4XL



Dark Heather Gray | C Navy | C Black | C Oatmeal Redwood



## Sidekick Crew

2430 | Long Sleeve Crew Neck

**\$25.00 WHSL**

\$65.00 MSRP

Solid: 88% recycled polyester/12% spandex sueded jersey  
 Heather: 44% recycled polyester/44% polyester/12% spandex sueded jersey  
 Men's Sizes: S-4XL

NEW COLORS



Dark Heather Gray | C Oatmeal | C Driftwood | N Navy Spruce Green



## Sidekick Quarter Zip

2440 | Quarter Zip Long Sleeve Pullover

**\$29.50 WHSL**

\$75.00 MSRP

44% recycled Polyester/44% polyester/12% spandex sueded jersey  
 Men's Sizes: S-3XL

NEW COLORS



Black | N Spruce Green | N White | N Dark Heather Gray Light Heather Gray Navy



## Sidekick Hoodie

2690 | Long Sleeve Hoodie

**\$28.00 WHSL**

\$70.00 MSRP

Solid: 88% recycled polyester/12% spandex sueded jersey  
 Heather: 44% recycled polyester/44% polyester/12% spandex sueded jersey  
 Men's Sizes: S-4XL

NEW COLORS



Light Heather Gray | N Black



## Trendsetter

2993 | Sueded Jersey Jogger

**\$25.00 WHSL**

\$65.00 MSRP

88% recycled polyester/12% spandex sueded jersey  
 Men's Sizes: S-3XL

NEW COLORS



Light Heather Gray | C Dark Heather Gray | C Black | N Oatmeal | N Smokey Blue



## Collaborator

4650 | Friction-Free Quarter Zip

**\$29.50 WHSL**

\$75.00 MSRP

48% polyester/32% recycled polyester/15% rayon/5% spandex interlock  
 Men's Sizes: S-4XL



Dark Heather Gray | C Black | C Navy



## Stabilizer

3510 | Heather Performance Fleece Jacket

**\$29.50 WHSL**

\$75.00 MSRP

Solid: 100% recycled polyester smooth face fleece  
 Heather: 55% polyester/45% recycled polyester  
 Men's Sizes: S-4XL

NEW STYLE



Black | N  
S-4XL

Navy | N  
S-4XL

Olive Drab | N  
S-3XL

Smokey Blue | N  
S-3XL



## Summit Jacket

4360 | Microfleece/Sherpa Bonded Jacket

**\$29.50 WHSL**  
\$75.00 MSRP

Solid: 100% recycled polyester  
Men's Sizes: S-3XL



NEW COLORS



Black | C

Marine Blue | C

Medium Gray  
Heather | N

Olive Drab | N

Spruce Green

## Maverick Button-Up

2960 | Button-Up Waffle Knit Pullover

**\$35.00 WHSL**  
\$90.00 MSRP

60% cotton/40% recycled polyester interlock waffle  
Men's Sizes: S-3XL



Gray | C

Navy | C

Black | C

Smokey Blue

## Architect

2640 | Diamond Fleece Pullover

**\$29.50 WHSL**  
\$75.00 MSRP

Interlock: 40% polyester/40% recycled polyester/15% rayon/5% spandex  
Quilt: 80% polyester/20% recycled polyester  
Men's Sizes: S-4XL



NEW COLORS



Cinder | C

Navy | C

Platinum | C

Black | N

Stone Gray/Cinder

Stone Gray

## Overachiever Jacket

4620 | Sweaterfleece Jacket

**\$38.00 WHSL**  
\$95.00 MSRP

80% recycled polyester/20% polyester sweaterfleece (345 GSM)  
Men's Sizes: S-5XL, LT-3XLT



Jet/Jet | C

Navy/Jet | C

Platinum | C

Black | C

## Maverick Quarter Zip

2920 | Quarter Zip Waffle Knit Pullover

**\$35.00 WHSL**  
\$90.00 MSRP

60% cotton/40% recycled polyester interlock waffle  
Men's Sizes: S-5XL, LT-3XLT



NEW COLORS



Black | N  
S-4XL

Navy | C  
S-4XL

Cinder | C  
S-3XL

Platinum | C  
S-3XL

Stone Gray  
S-3XL

## Overachiever Vest

4630 | Sweaterfleece Vest

**\$34.00 WHSL**  
\$85.00 MSRP

80% recycled polyester/20% polyester sweaterfleece (345 GSM)  
Men's Sizes: S-4XL

NEW COLORS



Cinder | C Platinum | C Black | N Nutmeg Brown | N



### Overachiever Pullover

4640 | Unisex Sweaterfleece Pullover

\$35.00 WHSL  
\$90.00 MSRP

80% recycled polyester/20% polyester sweaterfleece (345 GSM)  
Unisex Sizes: XXS-3XL



Black | C Jet/Black



### Explorer

6520 | Ultimate Stretch Waterproof Breathable Rain Jacket

\$56.00 WHSL  
\$140.00 MSRP

52% polyester/48% recycled polyester  
20K/20K waterproof/breathable  
Men's Sizes: S-5XL, LT-3XLT



Black Navy



### Commuter

6300 | Executive All-Season Jacket

\$54.00 WHSL  
\$135.00 MSRP

Shell: 50% recycled polyester/50% polyester  
10K/10K waterproof/breathable  
Lining: 100% polyester mesh  
Men's Sizes: S-4XL



Black | C Jet/Black | C



### Trailblazer Jacket

4000 | High-Stretch Fleece-Lined Softshell Jacket

\$32.00 WHSL  
\$80.00 MSRP

Outer Layer: 94% recycled polyester/6% spandex woven,  
8K/1K waterproof/breathable  
Inner Layer: 100% recycled polyester microfleece  
Men's Sizes: S-5XL, LT-2XLT



Black | C Jet/Black | C



### Trailblazer Vest

4050 | High-Stretch Fleece-Lined Softshell Vest

\$28.00 WHSL  
\$70.00 MSRP

Outer Layer: 94% recycled polyester/6% spandex woven,  
8K/1K waterproof/breathable  
Inner Layer: 100% recycled polyester microfleece  
Men's Sizes: S-4XL



Black/Black | C Navy/Navy | C Tar/Black | C Bright Red/Black



### Guardian

4200 | Velvet-Lined Softshell Jacket

\$44.00 WHSL  
\$100.00 MSRP

Outer Layer: 86% recycled polyester/14% spandex,  
10K/3K waterproof/breathable  
Inner Layer: 50% recycled polyester/50% polyester  
Men's Sizes: S-5XL, LT-2XLT

NEW COLORS



Black | C Navy | C Olive Green | N



## Discoverer

3000 | Smooth Face Vest

**\$35.00 WHSL**  
\$90.00 MSRP

Shell: 60% polyester/40% recycled polyester fine denier woven  
Insulation: 65% polyester/35% recycled polyester (100 GSM)  
Men's Sizes: S-3XL

NEW COLORS



3140D | Jet | N



Jet

## Traveler Jacket

3140 | Eco-Insulated Packable Jacket

**\$44.00 WHSL**  
\$110.00 MSRP

Shell: 100% recycled polyester fine denier woven (Jet)  
Shell: 60% polyester/40% recycled polyester fine denier woven (Black, Navy, Nickel)  
Insulation: 65% polyester/35% recycled polyester (60 GSM)  
Men's Sizes: S-4XL



3140 | Black | C 3140 | Navy | C 3140 | Nickel



Black, Navy, Nickel



Black | C Navy | C Titanium | C Jet/Black | C Navy/Jet

## Front Runner Vest

3120 | Eco-Insulated Quilted Vest

**\$35.00 WHSL**  
\$90.00 MSRP

Shell: 60% polyester/40% recycled polyester fine denier woven  
Insulation: 65% polyester/35% recycled polyester (120 GSM)  
Men's Sizes: S-5XL, LT-3XLT

NEW COLORS



3150D | Jet | N



Jet

## Traveler Vest

3150 | Eco-Insulated Packable Vest

**\$35.00 WHSL**  
\$90.00 MSRP

Shell: 100% recycled polyester fine denier woven (Jet)  
Shell: 60% Polyester/40% recycled polyester fine denier woven (Black, Navy, Nickel)  
Insulation: 65% polyester/35% recycled polyester (60 GSM)  
Men's Sizes: S-4XL



3150 | Black | C 3150 | Navy | C 3150 | Nickel



Black, Navy, Nickel



Black | C Jet | C Navy | C Jet/Black | C Navy/Jet

## Front Runner Jacket

3160 | Eco-Insulated Quilted Jacket

**\$46.00 WHSL**  
\$115.00 MSRP

Shell: 60% polyester/40% recycled polyester fine denier woven  
Insulation: 65% polyester/35% recycled polyester (120 GSM)  
Men's Sizes: S-5XL, LT-3XLT

NEW STYLE



Black | N



Fatigue Green | N



Olive Drab | N

## Artisan

3070 | Shirt Jacket

**\$42.00 WHSL**  
\$105.00 MSRP

Shell: 100% recycled polyester fine denier woven  
Insulation: 65% polyester/35% recycled polyester (100 GSM)  
Men's Sizes: S-3XL



NEW STYLE

Black | **N**Fatigue Green | **N**Navy | **N**

## Aviator

3050 | Bomber Jacket

**\$42.00 WHSL**

\$105.00 MSRP

Shell: 100% recycled polyester fine denier woven  
Insulation: 65% polyester/35% recycled polyester (60 GSM)  
Men's Sizes: S-3XL

NEW STYLE

Black | **N**

## Innovator II

3090 | Insulated Hoodie

**\$50.00 WHSL**

\$125.00 MSRP

Shell: 100% recycled polyester fine denier woven  
Insulation: 65% polyester/35% recycled polyester (120 GSM)  
Men's Sizes: S-3XL



Black



Dark Heather Gray

**\$75.00 WHSL**

\$190.00 MSRP

Shell: 50% recycled polyester/50% polyester woven,  
10K/10K waterproof/breathable  
Insulation: 65% polyester/35% recycled polyester (160 GSM)  
Men's Sizes: S-5XL, LT-3XLT

## Defender

6320 | Luxe Eco-Insulated Jacket

**STORM CREEK®**

### Orders

All pre-books must be received by March 1, 2023, to ensure delivery. Orders can be emailed to [orders@stormcreek.com](mailto:orders@stormcreek.com) or through your territory sales representative. Call (651) 480-3000 with questions.

### Uniforms

Because we have deep inventory in so many of our styles (see Core Color icon), we are a great choice for outfitting your staff year round.

### Decoration

Make a statement with your brand. We make it easy to show off your logo on our apparel. We offer embroidery, heat transfer, custom patches, and Flexstyle 3D transfers. Call for pricing.

### Dealer Web Portal

We are committed to helping you sell Storm Creek in your store. Please visit [retailer.stormcreek.com](http://retailer.stormcreek.com) for access to inventory, downloadable images, P.O.P. signage, and to place orders. Please contact [derek@stormcreek.com](mailto:derek@stormcreek.com) if you have any questions or needs.

### Minimum Advertised Pricing (MAP) Policy

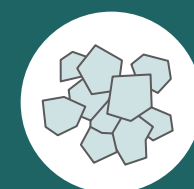
As a qualified Storm Creek reseller, you agree to fully adhere to MAP policies to maintain the integrity of our brand. This means you will not advertise Storm Creek products below MAP pricing, which equals MSRP x .8.

Let us know how we can help you! Contact us at (651) 480-3000 or [sales@stormcreek.com](mailto:sales@stormcreek.com).

FROM BOTTLE  
TO BETTER



POST-CONSUMER  
PLASTIC BOTTLE



PLASTIC FLAKES



PLASTIC BEADS



POLYESTER YARN



FINISHED GARMENT





1-651-480-3000